

Birth to Age Three:



Discovering Disability or Delay

Discovering your child has a delay or disability

Emotions



Action

You may feel...



What can you do?

- Learn about your child's condition
- Seek out your state's Parent Training and Information (PTI) Center
- Register with the Exceptional Family Member Program (EFMP)
- Contact STOMP
- Talk to your family



Early Intervention

Individuals with Disabilities Education Act (IDEA)

- Provides services with goal of limiting effects of child's disability or delay
- Services required by law, and usually free
- Focus is on child and family



Why start so young?



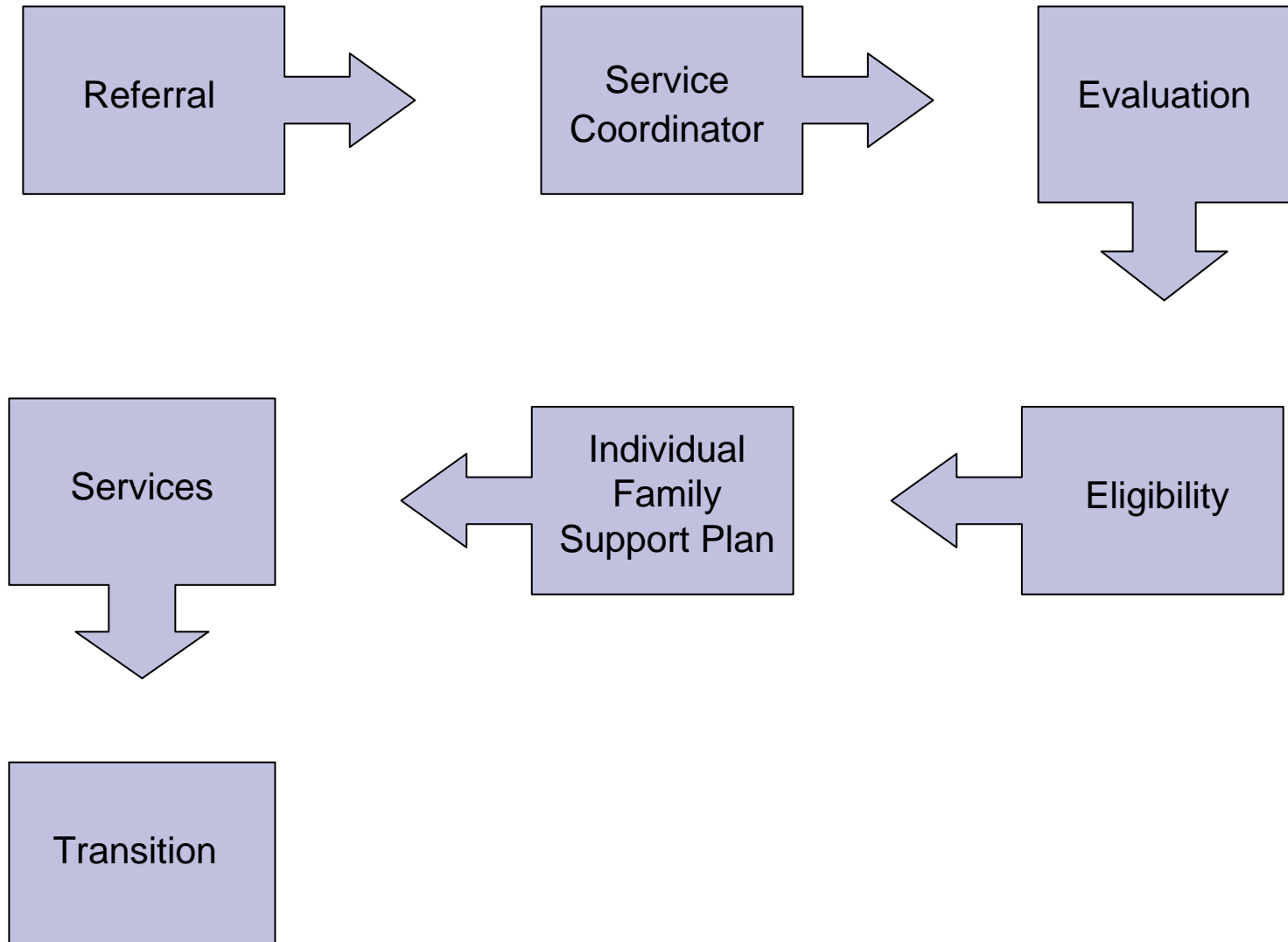
- Child's rate of learning and development
- Parents learn early how to best help their child
- Long-term developmental and educational gains can be made

Early Intervention Helps Families

- Decreases isolation and stress
- Empowers parents as they learn how to help their child
- Improves outlook



Early Intervention System



Referral



Can be made by

- Parents
- Physician
- Other concerned people



Service Coordinator

- Assigned after referral
- Coordinates appointments for assessments and evaluations
- Helps with creation of your Individual Family Service Plan (IFSP)
- Aids with transition out of Early Intervention



Evaluation

- Parent interview
- Medical history
- Assessments by specialist in areas of particular concern
- Must be done within 45 days of referral



Possible areas of evaluation

- Physical development
- Language and speech development
- Social and emotional development
- Adaptive development
- Cognitive development



The Eligibility Meeting

- ☑ A picture of your child
- ☑ Copies of prior evaluations
- ☑ List of concerns and ideas for you child
- ☑ List of questions developed over time
- ☑ A friend or family member for company and moral support
- ☑ Pertinent medical records
- ☑ Paper and pen to take notes
- ☑ A sweet snack to share



Individual Family Support Plans

- Input concerning family resources, goals, and concerns
- Identify child's current developmental level
- Will state developmental goals for the child
- Identify where the services will be provided, start date and duration of services
- Name of service coordinator
- Transition plan



Available Services

- Assistive Technology
- Audiology
- Family Training
- Medical Services
- Nursing Services
- Nutrition Services
- Occupational Therapy
- Physical Therapy
- Psychological Services
- Respite Care
- Service Coordination
- Specialized Instruction
- Speech and Language
- Transportation
- Vision Services



Advocacy

- Parents are natural advocates
- Learn about IDEA part C
- Get organized



Your Rights Under IDEA

- Go through the Early Intervention process in your own language
- Receive copies of all evaluation results
- Refuse any specific service without losing the right to other services
- Information regarding your family will be confidential
- Examine all records regarding your child and family
- Withhold or withdraw consent at any stage of the process
- Be told of any changes in your child's evaluation or services before any are made
- Refuse Early Intervention services

Challenges for Military Families

Relocation

- Hand carry Early Intervention documents
- Contact new Early Intervention Program as soon as possible
- Contact NICHCY for contact information for new program



Extra Support

- STOMP
- State Parent Training Center
- NICHCY
- TRICARE
- Military OneSource
- MilitaryHOMEFRONT

